



Eliminate Blind Spots in Your Baggage Operations

SmartSuite Enterprise is a real-time operational passenger and Baggage Management System (BMS) that collects, centralizes, and shares data across multiple systems and is used by many of the world's largest airports and airlines. It provides enterprise-wide, end-to-end visibility of the passenger's journey and the entire baggage handling process.

- **Visualize operations through a single pane of glass:** Get historical, daily, or real-time views into baggage operations from check-in through handling, transfers, and delivery performance.
- **Globally search for bags:** Enable airports and airline partners to track and find bags and identify root cause for missed bags.
- **Access data on the move:** Receive alerts, search for bags, and view reports or dashboards from any web-enabled device.

Key Benefits

- ▼ Improve on-time performance by removing bottlenecks
- 🔍 Minimize missed bags
- 💰 Reduce maintenance costs by identifying early trends in degrading performance
- ♥ Deliver an exceptional passenger experience

"Employees will be better able to self-manage their workload, ensure that all bags are scanned and loaded and make informed decisions as flights near their departure times."

Darin Juby, Director of Baggage Services,
Toronto Pearson

70+

Airlines Served

250+

Airports Served

800M+

Bags Processed Annually

SmartSuite Enterprise Modules



Multi-System Management

Centralize the management of your multi-product SmartSuite environment from any device, anywhere.



Advanced Dashboards & Reporting

Create customizable dashboards and reports to view performance data across the operation and make data-driven decisions.



Advanced Analytics

Gain operational insight and drive business planning using real-time statistics on current and past system performance.



Passenger Notification Engine

Enables passengers to receive real-time journey and bag information via mobile, web-enabled devices, or through airline applications.



Baggage Information Displays

Provides an integrated view of end-to-end baggage processing and performance for baggage handlers.



Automated Resource Planning

Optimizes resource plans based on flight schedules, asset availability, and bag volumes.

Our Clients

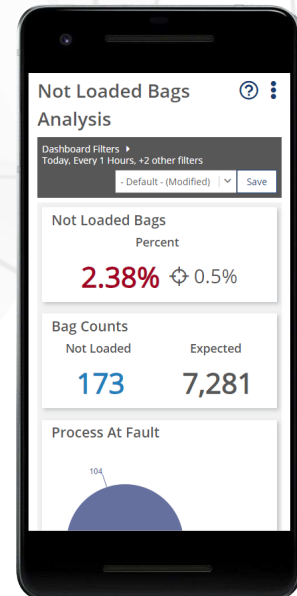
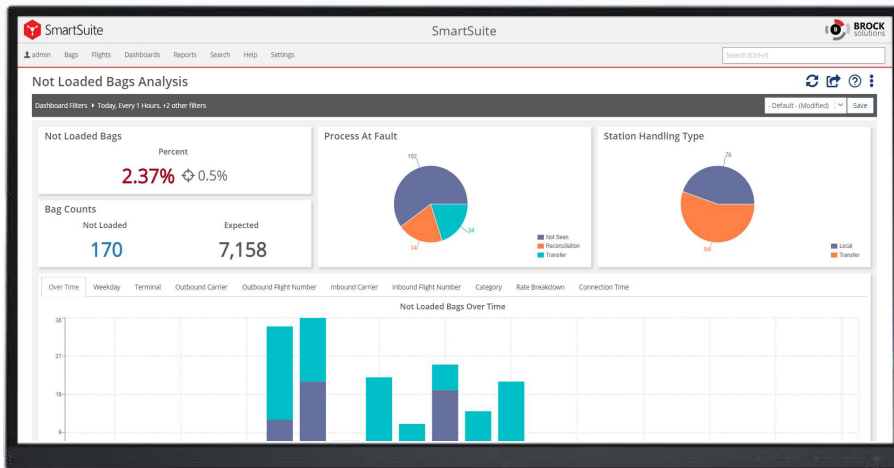
Toronto Pearson



BRITISH AIRWAYS



Southwest



Screenshots of Not Loaded Bag Analysis Dashboard on the web client and mobile device.

Be Part of the Digital Transformation

At Brock Solutions, we understand that Digital Transformation is more than just buzz words. We make it our business to bring automation to your operations, so you can focus on your business. To talk to an expert or schedule a demo, scan the QR code or contact us at:

Web: brocksolutions.com/contact | Email: smartsuite@brocksolutions.com

